

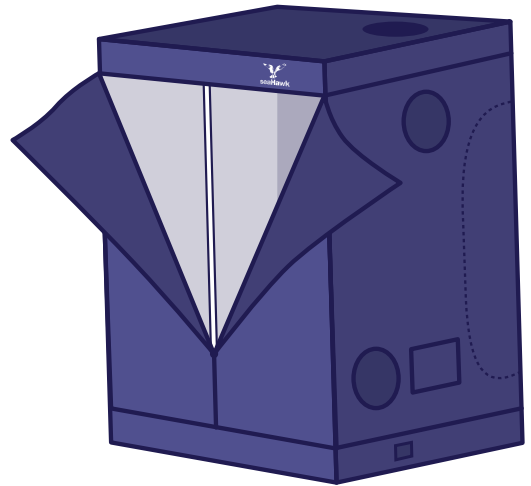


GROW TENT

2.3M HIGH 1.45 x 1.45M

4407

INSTRUCTION MANUAL



WHAT'S IN THE BOX

Please take the time, before assembling tent, to make sure all contents are present within this box.

8



A1 44cm

8



A2 97.5cm

8



4



B 113.5cm

4



C 113.5cm

4



2



Shallow

2



Shallow

E 74.5cm

1



2



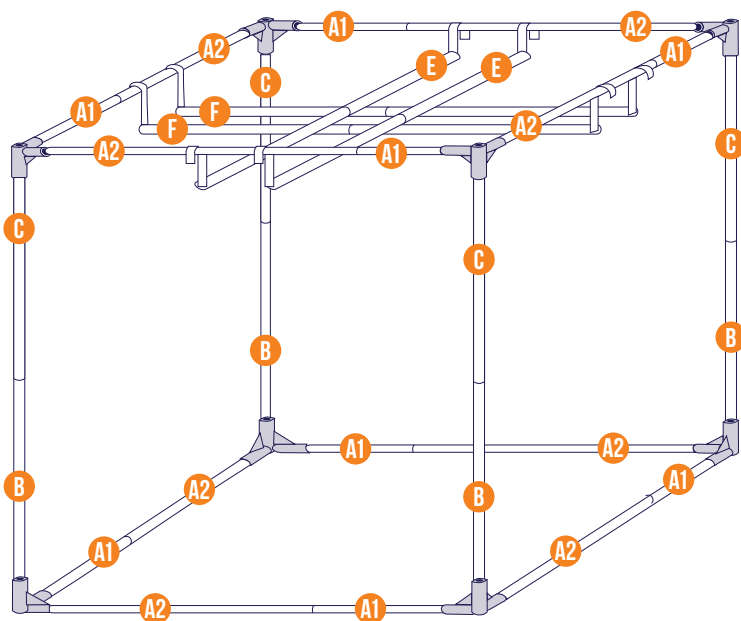
Deep

2

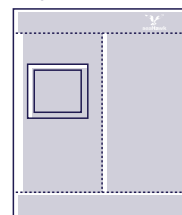


Deep

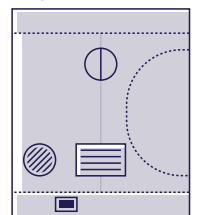
F 74.5cm



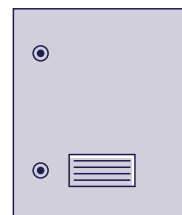
FRONT



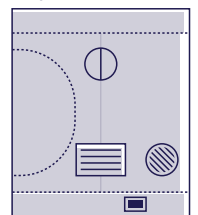
RHS



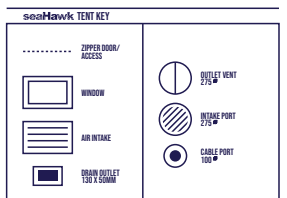
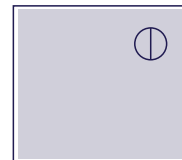
REAR



LHS



ROOF



ASSEMBLY INSTRUCTIONS

STEP 1

Connect 1pc "A1" and 1pc "A2" pole together to be 140cm long (8 pcs in total). Then, construct the metal tent frame by assembling metal poles and corners as per diagram. **To avoid damage, it is very important to check that all the poles are pushed completely into each corner/connector/joiner. Use a rubber mallet to gently tap fittings into the poles if necessary.**

Failure to do so will not only make the tent cover difficult to fit but may also stretch the seams and allow emissions of light from the functioning tent.



STEP 2

Un-zip top and base zipper system from the FRONT SIDE (where it has **seaHawk** logo and see-through windows) all the way to the back side of the tent. **It is important you leave the zippers on BACK SIDE closed.**



STEP 3

Locate the tents' ROOF (**Refer PIC A**) and place neatly and carefully over all 4 corners of the top frame, ensuring a snug fit.

STEP 4

Slip the base section of the tent cover beneath the assembled frame. Ensure it fits in a neat and precise manner around the tent frame corners and sides (**Refer PIC B**).



STEP 5

Carefully close the two large horizontal zipper systems simultaneously. You may have to push the upright poles in a bit as you zip around each corner (**Refer PIC C**).

STEP 6

Attach shallow/deep bars, waterproof floor tray, and pouch in place along with the Nylon fabric straps.



DISMANTLING OF SMART TENT

- 1 Ensure the tent is clean and dry before dismantling.
- 2 Reverse the operation as per above instruction. (**Step 6 > Step 5 > Step 4 > Step 3 > Step 2 > Step 1**)
To ensure your **Smart Tent** maintains the same "lightproof" quality, always dismantle carefully and avoid stretching the seams of the tent cover.



seaHawk is distributed in Australia by Holland Forge PTY LTD.

