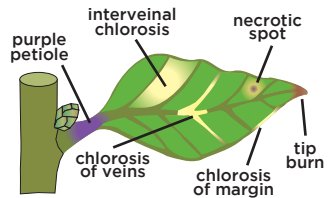




Ca-Mg-Fe

Ca-Mg-Fe helps prevent or cure leaf yellowing, leaf curl, stunted growth, withered fruit-set and bud rot.

- **Why FloraMax Ca-Mg-Fe is the most effective Cal-Mag:** Ca-Mg-Fe is not configured like regular cal-mag additives, and for a good reason! For many growers, plant deficiency symptoms occur due to poor base-nutrient design. There is often a lack of calcium, or the SIX essential trace elements - iron, copper, manganese, zinc, molybdenum and boron. Therefore, FloraMax Ca-Mg-Fe overcomes this problem by containing cal-mag PLUS iron, copper, manganese, zinc, molybdenum and boron.
- **The trace elements in Ca-Mg-Fe are made from alkaline-resistant compounds that can cope with pH levels up to 10.** Alternative trace element species however become unstable at much lower pH's and is one of the main reasons why trace element deficiencies are so common.
- **Ca-Mg-Fe is 100% compatible with all liquid or powdered base nutrients.**
- Dosage: 1-2ml/L (4-7.5ml/Gal) during veg and flower.
- Available in: 1L // 5L // 20L // 1000L



FloraMax Ca-Mg-Fe fights common nutrient deficiency symptoms

NOTE: Avoid using Ca-Mg-Fe with VegaFlora A+B or Veg-1 as these elements are already included and an excess will likely cause complications.

TESTIMONIALS

“Without Ca-Mg-Fe the growth would stall and there were all types of foliar issues like twisting and dead spots. Now our plants are fully lush all the way through!”

“With our hard water we were regularly having problems... The Ca-Mg-Fe has really helped to keep our plants strong with consistent weight and crop speed”

Analytical Chemists and Horticultural Consultants **Since 1966**

www.floramax.com

 @floramaxnutrients